



# GAT MONTHLY MEMBERSHIP PROGRESS REPORT

Results as of: 2/28/2021

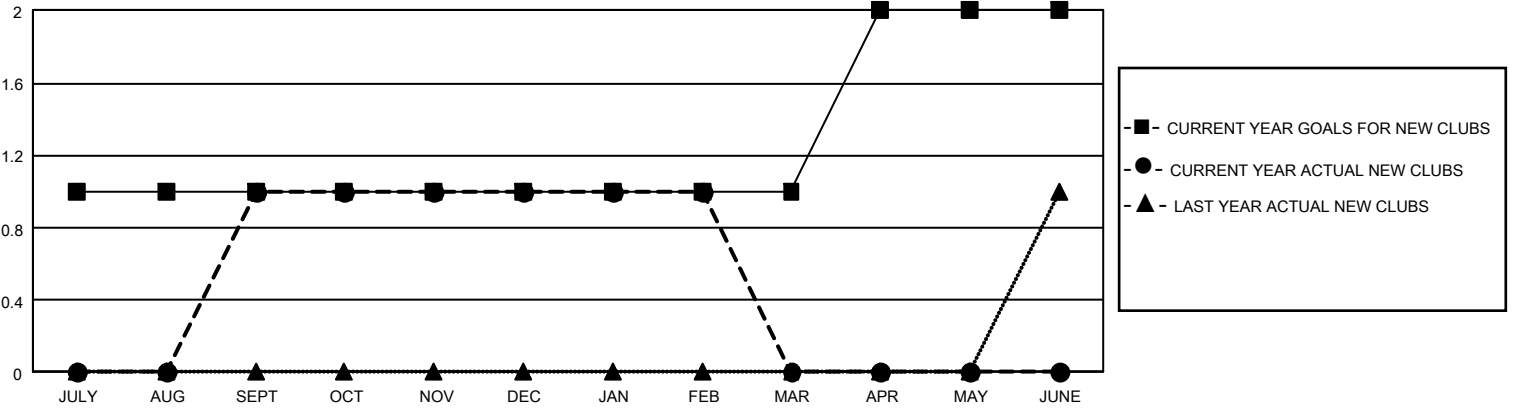
## GAT Constitutional Area 5 - China

REPORT DOES NOT INCLUDE CLUBS IN UNDISTRICTED AREAS.

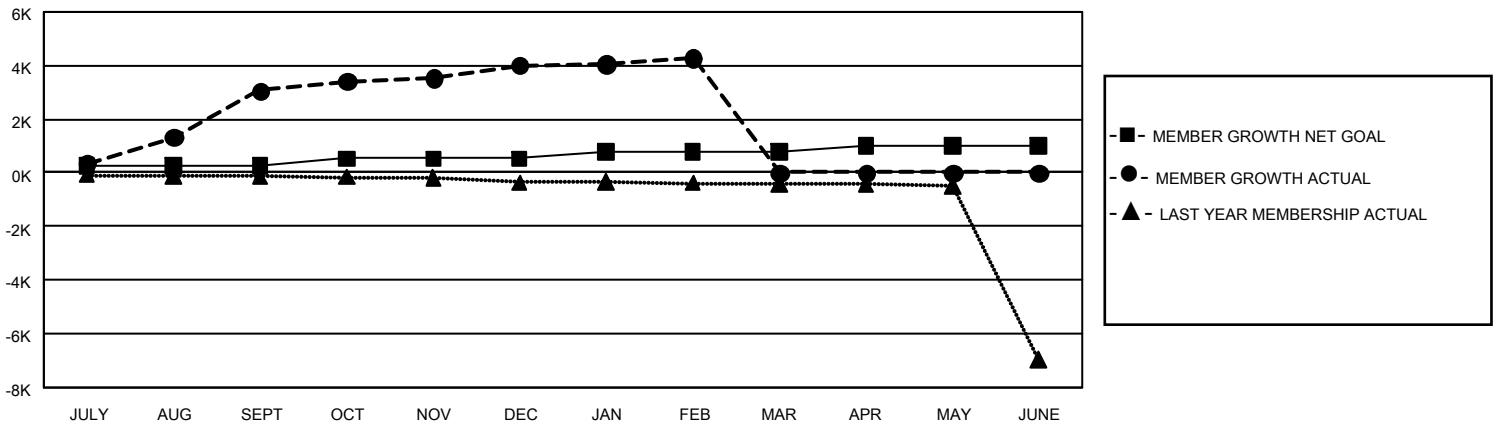
Clubs			
RESULTS FOR 2020-2021			
QUARTER	NEW CLUB GOAL	NEW CLUBS	DROPPED CLUBS
JULY/AUG/SEPT	3	1	4
OCT/NOV/DEC	0	0	0
JAN/FEB/MAR	0	0	4
APR/MAY/JUNE	3	0	0

Members			
RESULTS FOR 2020-2021			
QUARTER	MEMBER GROWTH NET GOAL	MEMBER GROWTH ACTUAL	DROPPED MEMBERS ACTUAL (including transfers)
JULY/AUG/SEPT	273	4,039	583
OCT/NOV/DEC	253	1,517	336
JAN/FEB/MAR	263	412	95
APR/MAY/JUNE	223	0	0

GOALS AND ACTUAL NEW CLUBS CUMULATIVE



GOALS AND ACTUAL MEMBERS CUMULATIVE



DROPPED CLUBS: 8	1,075 CLUBS OF 1,361 ADDED 1 OR MORE NEW MEMBERS	<u>GENDER DISTRIBUTION</u>	
<u>DROPPED MEMBERS</u>		MALE	22,004 (62.19%)
DECEASED	15	FEMALE	13,379 (37.81%)
CLUB CANCELLED	36	TOTAL FAMILY UNIT MEMBERS	
OTHER	963	2,372	
TOTAL	1,014	FAMILY MEMBERS PAYING HALF DUES	
		1,221	

[CLICK HERE FOR CUMULATIVE MEMBERSHIP DATA](#)